



**COMMUNITY HEALTH NEEDS ASSESSMENT (CHNA)
IMPLEMENTATION PLAN PASCO COUNTY 2020-2022**



A blue-tinted photograph of a park. In the foreground, there is a paved path and a wooden bench. In the background, there are large trees and a building. The overall scene is peaceful and natural.

BayCare's mission
is to improve the health
of all we serve through
community-owned services
that set the standard
for high-quality,
compassionate care.

TABLE OF CONTENTS

Letter from the President	2
Listening to Pasco County	3
Identifying Priorities	5
Developing a Strategic Implementation Plan	7
Behavioral Health	9
Access to Health Services	13
Physical Activity, Nutrition and Weight	17
Hospital Information	20

LETTER FROM THE PRESIDENT

BayCare is committed to improving the health of all those in the communities we serve. Caring for the people who need us most is a fundamental part of our mission.

In 2019, BayCare provided \$461 million in community benefit, including \$103 million in charity care, to assure high-quality, timely and appropriate care to those who otherwise couldn't afford it. Every day, we're working hard to improve the health and well-being of our communities, and we know there's more that needs to be done.

In 2019, Morton Plant North Bay Hospital worked together with the Florida Department of Health, Moffitt Cancer Center and Advent Health to conduct a community health needs assessment (CHNA). Working in collaboration, these organizations developed a shared strategy to collect data that helped identify, prioritize and address the emerging health needs of the community. These community health needs were also discovered through available local, state and national data. Most importantly, the assessment surveyed those we serve. We also engaged community leaders and key advocates through interviews, surveys, focus group listening sessions and a video voice project. Morton Plant North Bay Hospital adopted a health improvement plan to address the needs that were uncovered. The plan includes clinical services, education and policy interventions that'll span the service area.

We encourage you to use this summary to gain a better understanding of our community's needs and to guide additional discussions with key decision makers and leaders.

To those who participated in our data collection efforts and prioritization exercise, thank you for your invaluable contributions. We look forward to sharing achievements of the implementation plan and ongoing conversations with all stakeholders and residents of our community.

Sincerely,

Brandon May, FACHE

President, Morton Plant North Bay Hospital



Brandon May

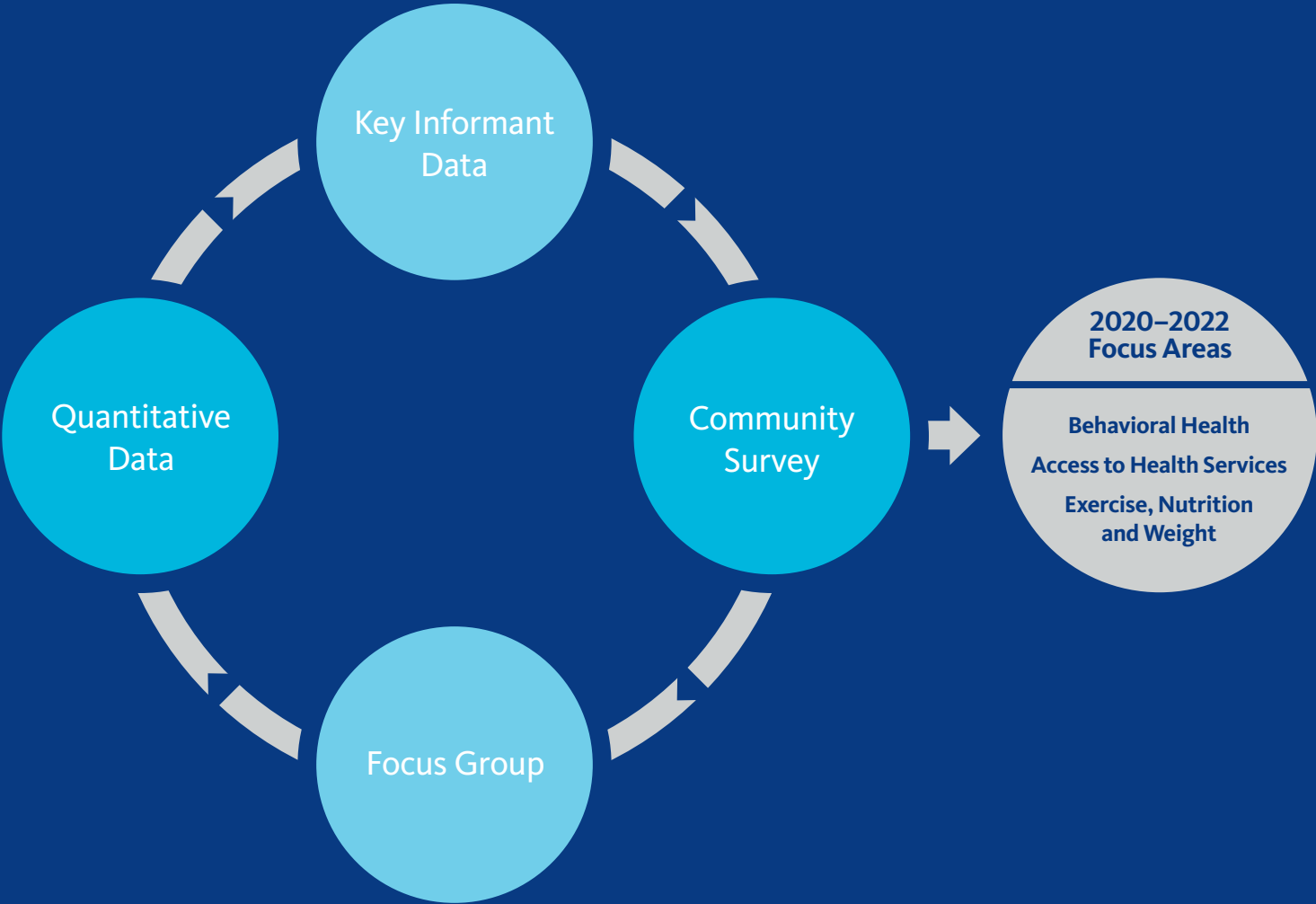
LISTENING TO PASCO COUNTY

Morton Plant North Bay Hospital recognizes that Pasco County's health improvement plan must start with a deep understanding of the issues affecting health and the community resources available to improve related health outcomes. To provide as complete an overview of the health behaviors and perceptions of Pasco County residents as possible, a 73-question community survey was developed. The primary purpose of using a community survey was to ensure that the voices of Pasco County residents were heard, engaging those most impacted by health issues where they live, work, play and raise families. The survey addressed health and lifestyle behaviors, quality of life and access to care.

The community survey used validated and reliable questions obtained from state and national needs assessments, passed a rigorous literacy review and was available in English and Spanish. Intentional and strategic outreach was integral in getting a robust and representative response rate. Surveys were deployed on-site at many locations across Pasco County, including churches, libraries, clinics, food pantries and community centers. This strategy allowed for the engagement of low-income, minority and medically underserved populations. Because of the collaboration with the Florida Department of Health, Moffitt Cancer Center and Advent Health, every zip code in Pasco County was represented in the survey collection.



IDENTIFYING PRIORITIES



IDENTIFYING PRIORITIES

Upon review of local community opinion from the 2019 CHNA survey, key informant interviews and related secondary health statistics data analysis, 11 health issues were identified:

- Access to health services
- Cancer
- Diabetes
- Exercise, nutrition and weight
- Heart disease and stroke
- Immunization and infectious disease
- Maternal, fetal and infant health
- Mental health and mental disorders
- Oral health
- Respiratory disease
- Substance abuse

In addition, focus groups comprised of advocates and community partners met to gain greater insight into these 11 health issues. The focus groups, guided by facilitators, used a participatory analysis technique. The technique engaged participants in guided discussions around specific topics using data placemats. The placemats displayed thematically grouped data, charts and graphs in an easy-to-understand format. Discussions were driven by three general questions:

- What surprises you about the data?
- What factors may explain some of the trends we're seeing?
- Does this lead to new questions?

Following the guided discussions, Healthy Communities Institute led the participants in a prioritization exercise. Each of the 11 health issues were presented for ranking based on the scope and severity of the issue and the ability to impact it. Each attendee was given an electronic voting device that allowed for a single vote in each

category for each health issue. After combining mental health/mental disorders and substance abuse under the single focus area of behavioral health, the top three focus areas for the 2020–2022 CHNA implementation strategy were:

- Access to health services
- Behavioral health
- Exercise, nutrition and weight

Although the majority of the overarching goals, objectives and efforts will concentrate on the top three focus areas, Morton Plant North Bay Hospital remains committed to supporting positive advancements in addressing diabetes, heart disease and stroke, while addressing the focus area of exercise, nutrition and weight. There were five health focus areas remaining:

- Cancer
- Immunization and infectious disease
- Maternal, fetal and infant health
- Oral health
- Respiratory disease

These remaining health needs are significant, but they're not directly addressed in the 2020–2022 health improvement plan strategies. However, they'll continue to be impacted through existing hospital strategies for clinical excellence and Morton Plant North Bay Hospital's partnerships within the community, including the Florida Department of Health and community members and partners who may be in a better position to address these health issues.

IMPROVING HEALTH IS MORE THAN JUST ACCESSING HEALTH CARE



Policies and Programs



Health Factors



Health Outcomes

Health Behaviors (30%)

- Tobacco Use
- Diet and Exercise
- Alcohol and Drug Use
- Sexual Activity

Clinical Care (20%)

- Access to Care
- Quality of Care

Social and Economic Factors (50%)

- Education
- Employment
- Income
- Family and Social Support
- Community Safety

Physical Environment (10%)

- Air and Water Quality
- Housing and Transit

Length of Life (50%)

Quality of Life (50%)

DEVELOPING A STRATEGIC IMPLEMENTATION PLAN

Through the comprehensive CHNA process, Morton Plant North Bay Hospital has a better understanding of the community's health and opportunities for improvement. In addition, we recognize that the CHNA isn't perfect, nor does it reflect each person's unique health experience. In many cases, the assessment validated some of what we already knew about the community, and in other cases we learned about significant shortfalls in the community's health. There are many needs in Pasco County, some of which are reflected in disparities of race, ethnicity, income, geography and education.

Because of our commitment to improving the health and well-being of our Pasco County residents, the Morton Plant North Bay Hospital Board of Directors support strategies to drive health improvement and approved the 2020–2022 health improvement plan. This plan will guide our health improvement efforts, while also leveraging hospital resources to strengthen community collaborations already established within the county, and will provide the guardrails for programmatic impact over the three-year cycle.

The 2020–2022 health improvement plan for Morton Plant North Bay Hospital was thoughtfully developed to leverage hospital and current community resources, while also working collaboratively across multiple sectors to engage new community partners. To align with population and public health best practices and acknowledge that improving health is more than just accessing health care, the plan includes a strong and directed focus on the social determinants that impact health.





BEHAVIORAL HEALTH

Behavioral health includes mental health, substance use and addiction intervention and prevention. Mental health is defined as a state of well-being in which every individual realizes his or her own potential, can cope with the normal stresses of life, can work productively and fruitfully, and is able to make a contribution to his or her community.¹ Mental health problems and substance use disorders sometimes occur together. This is because:

- Certain illegal drugs can cause people with an addiction to experience one or more symptoms of a mental health problem
- Mental health problems can sometimes lead to alcohol or drug use, as some people with a mental health problem may misuse these substances as a form of self-medication
- Mental and substance use disorders share some underlying causes, including changes in brain composition, genetic vulnerabilities and early exposure to stress or trauma²

In Pasco County, mental health and substance use have consistently been identified in both the primary and secondary data as a top health priority. Domestic violence rates and unintentional injuries remain significantly higher than the state rate and are getting worse. Suicide rates remain steady and are higher than the state rate.⁴ Disparities of age and income exist in those seeking, but unable to get, mental health treatment in these communities.³

Behavioral Health Goal

Increase access to appropriate behavioral health services across the BayCare footprint

Objective

By December 31, 2022, deploy education, awareness, prevention and access to care strategies to reduce the incidence of suicide.



More than one in four adults living with serious mental health problems also has a substance use problem.²

BEHAVIORAL HEALTH IN PASCO COUNTY

20.8%

Residents report a depression diagnosis³



27.5

Drug poisoning deaths per 100,000 population (*higher in Pasco County than in Florida and the U.S.*⁶)



23.3%

Adults are current smokers, compared to 15.5% of all Florida adults



Alzheimer's, Dementia, Depression

Rates in the Medicare population in Pasco are higher than in Florida and the U.S., and are increasing over time⁵

16.9

Suicide deaths per 100,000 population (*higher in Pasco County than in Florida and the U.S.*⁴)



1,370

Residents for every one mental health provider (*310:1 among top U.S. performers.*⁶)



¹CDC, 2018

²U.S. Department of Health & Human Services, 2019

³2019 CHNA Community Survey

⁴Florida Charts, 2018

⁵Centers for Medicare & Medicaid Services, 2017

⁶RWJF County Health Rankings, 2019

BEHAVIORAL HEALTH

2022 Impact Objectives

- Provide *Mental Health First Aid* training to at least 100 community members annually
- Launch the Gun Shop Project by engaging gun shop owners and nontraditional organizations, to include community gatherings and *Mental Health First Aid* training
- Develop a strategy to reduce substance use by expanding education on medication-assisted treatment
- Provide support and community coordination of efforts with the West Central Florida Mental Wellness Coalition
- Support a behavioral health liaison at Morton Plant North Bay Hospital
- Hire and integrate a full-time behavioral health provider to help primary care providers (PCPs) across the system provide appropriate and timely care to patients who have behavioral health diagnoses
- Provide funding to support the infrastructure build-out of the Academy Center
- Expand the *Projects for Assistance in Transition from Homelessness (PATH)* program to assist Metropolitan Ministries with bio-psycho-social assessments, reducing delays in establishing services with Metropolitan Ministries
- Expand health care navigator services to Metropolitan Ministries
- Provide *Trauma-Informed Care* and *Mental Health First Aid* training to the staff of the Boys & Girls Club
- Provide support for National Alliance on Mental Illness' (NAMI) *Ending the Silence* programs in at least three middle/high schools each year
- Provide support for the Pasco Alliance for Substance Abuse Prevention (ASAP) to include operations and partnership activities
- Support tobacco cessation services including developing a vaping education/awareness campaign targeted at youth



ACCESS TO HEALTH SERVICES

Access to comprehensive, quality health care services is important for promoting and maintaining health, preventing and managing disease, reducing unnecessary disability and premature death, and achieving health equality for all Americans.¹

Access to health services means the timely use of personal health services to achieve the best outcomes. It requires gaining entry into the health care system (usually through insurance coverage), geographic availability of needed health care services, ability to receive services when needed, and finding a health care provider with whom the patient can communicate and trust. Access to health care impacts one's overall physical, social and mental health status and quality of life.¹

In Pasco County, both primary and secondary data indicate that access is a high health priority for the community. The county is a provider shortage area for primary care, dental and mental health providers, meaning there are too few providers compared to the number of residents.²

Access to Health Services Goal

Increase access to timely, affordable and appropriate health care services for all Pasco County residents, with a focus on those disproportionately impacted

Objective

By December 31, 2022, there will be an increase in percentage of residents who have access to health care services and resources as measured by an increase in the number of individual encounters through patient navigator enrollment and/or other resource links.



ACCESS TO CARE IN PASCO COUNTY

30.5%

Low-income residents don't have insurance, compared to 11.5% of all residents⁴



Barriers for those who can't get medical care:

62.4%

Cost



10.3%

Parents report they had trouble getting medical care for their child⁴



37.4%

Low-income residents experience difficulties getting needed health care, compared to 22.8% of all residents⁴

11.5%

Getting an Appointment



27.3%

Individuals identified as having low health literacy⁴



60%

Survey respondents went to the ER for a reason other than an emergency or life-threatening situation



¹Healthy People 2020, 2019

²HRSA, 2019

³RWJF County Health Rankings, 2019

⁴2019 CHNA Community Survey

ACCESS TO HEALTH SERVICES

2022 Impact Objectives

- Explore new and existing technologies to improve connections to community resources and close the loop of referrals in Pasco County
- Expand access to affordable medications through support of the *Medication Assistance Program*
- Expand access to health care, health insurance options and community resources through support of navigator services
- Integrate Aunt Bertha technology into Cerner to improve connections to community resources
- Continue to support the voucher program with Premier Community Health Clinic by serving at least 325 individuals per year
- Continue to support the ARNP at the Good Samaritan Clinic
- Support a .5 full-time employee (FTE) for the Mobile Medical Unit to serve at least 100 individuals per year
- Support lab services for individuals seen by the Mobile Medical Unit and CARES Clinic
- Assist chronic condition patients with transportation to/from preventive care appointments by utilizing ride share services
- Partner with Pasco County public transportation for paratransit services for transportation to and from physician appointments, serving at least 200 people per year
- Provide resiliency training and/or *Mental Health First Aid Trainer* training to at least two Faith Community Nurses per year
- Provide a .5 FTE RN to serve as a community connector for high-risk Emergency Department patients.



PHYSICAL ACTIVITY, NUTRITION AND WEIGHT

Physical activity and proper nutrition are key drivers in achieving and maintaining a healthy weight. The combination of these drivers decreases the likelihood of stroke, high blood pressure, heart disease, type 2 diabetes, depression and some cancers, and are a contributing factor in the prevention of many other health problems.¹

Obesity effects one in five children and one in three adults, and costs the U.S. \$147 billion annually.² Efforts to improve weight must include a focus not only on individual behaviors, but on policy and environmental changes, from tackling root causes of food insecurity to school-based interventions to safe places to be active outdoors. Primary and secondary data sources elevated physical activity, nutrition and weight to be a high health priority for Pasco County. Among adults, 61 percent of Pasco residents are overweight or obese.³

Physical Activity, Nutrition and Weight Goals

Pursue policy, system and environmental change to maintain or increase the number of Pasco County residents who have a healthy weight, with a focus on those disproportionately impacted.

Objective 1

By December 31, 2022, there will be an increase in the number of individuals served through the emergency food and medically tailored meal program.

Objective 2

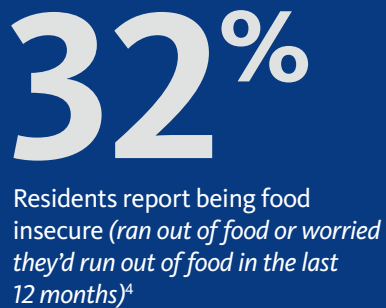
By December 31, 2022, there will be an increase in the number of individuals screened for and educated around chronic disease.



PHYSICAL ACTIVITY, NUTRITION AND WEIGHT IN PASCO COUNTY



High school students in Pasco don't have sufficient vigorous physical activity



Those who have diabetes who are food insecure⁴



¹Healthy People 2020, 2018

²CDC, 2018

³Florida Charts, 2018

⁴2019 CHNA Community Survey

PHYSICAL ACTIVITY, NUTRITION AND WEIGHT

2022 Impact Objectives


- Implement, as standard of care at all inpatient touch points, the two-question USDA Food Insecurity screener
- Explore partnerships to increase chronic illness self-management by improving food security among Pasco County residents
- Expand the Children's Wellness and Safety Team's existing children's obesity prevention programs, nutritional workshops and large-scale community events
- The Community Health Team will deepen multidisciplinary partnerships across the service area to include prevention-based screening and/or classes
- Offer graduates of the DEEP/GIFT programs vouchers for six months of water aerobics classes at the New Port Richey Recreation and Aquatic Center
- Expand the Premier Community Health Clinic voucher program for a select number of diabetes patients
- Support a Healthy Living Coach at the Premier Community Health Clinic.

HOSPITAL INFORMATION

Morton Plant North Bay Hospital *New Port Richey, Florida*

Morton Plant North Bay Hospital is West Pasco County's only not-for-profit community hospital. Located in New Port Richey, the 120-bed hospital provides highly technical and specialized care to the people of Pasco County. Some of the services provided include, but aren't limited to, intensive care, outpatient rehabilitation, cardiac rehabilitation, case management, spiritual care, emergency care, including stroke and cardiac care, financial assistance services, orthopedics, outpatient/inpatient surgery, diagnostic testing and a sleep center. Additional facilities include the 30-bed inpatient Mitchell Rehabilitation Hospital, specializing in neurological and orthopedic rehabilitation, and the Morton Plant North Bay Recovery Center, a 72-bed inpatient psychiatric unit that offers 24-hour nursing care for adults dealing with behavioral disorders and addictions.



An aerial photograph of a coastal town, likely Morton Plant North Bay, is shown. The left side of the image is covered by a large, dark blue semi-transparent overlay. A white-bordered box is centered on this overlay, containing text. The right side of the image shows the actual town, including houses, trees, a road, and a signpost, under a clear sky.

The 2020–2022 health improvement plan for Morton Plant North Bay Hospital was thoughtfully developed to leverage hospital and current community resources, while also working collaboratively across multiple sectors to engage new community partners. To align with population and public health best practices and acknowledge that improving health is more than just accessing health care, the plan includes a strong and directed focus on the social determinants that impact health.

